

Where we are at

As you are aware, we held our first Public Information and Consultation Days in December. We are currently reviewing all the information we received from the people who attend those events. This information will help us to identify the areas most at risk of flooding in the catchment.

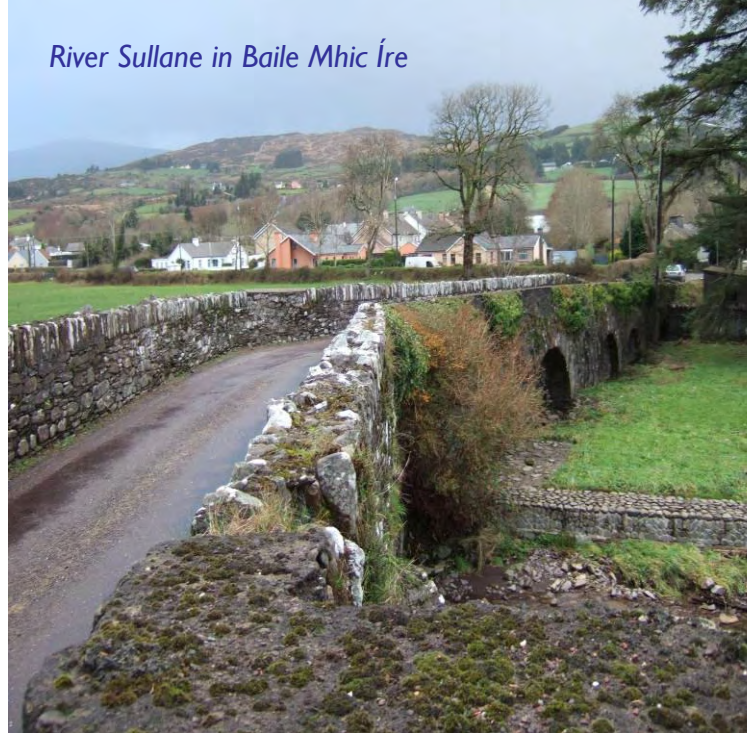
The defence asset survey, described in our 'Focus On' section last month, is continuing. 10km have now been completed and another 20km will be complete in the next few weeks.

The scoping stage of the SEA is progressing. A workshop held this month with local and government environmental organisations identified the key environmental issues in the catchment and developed a set of environmental objectives for the study. This information will be used in the coming months to inform the identification of appropriate flood risk management options. An Environmental Scoping Report, summarising the scoping stage of the SEA, will be published on our website in the spring.

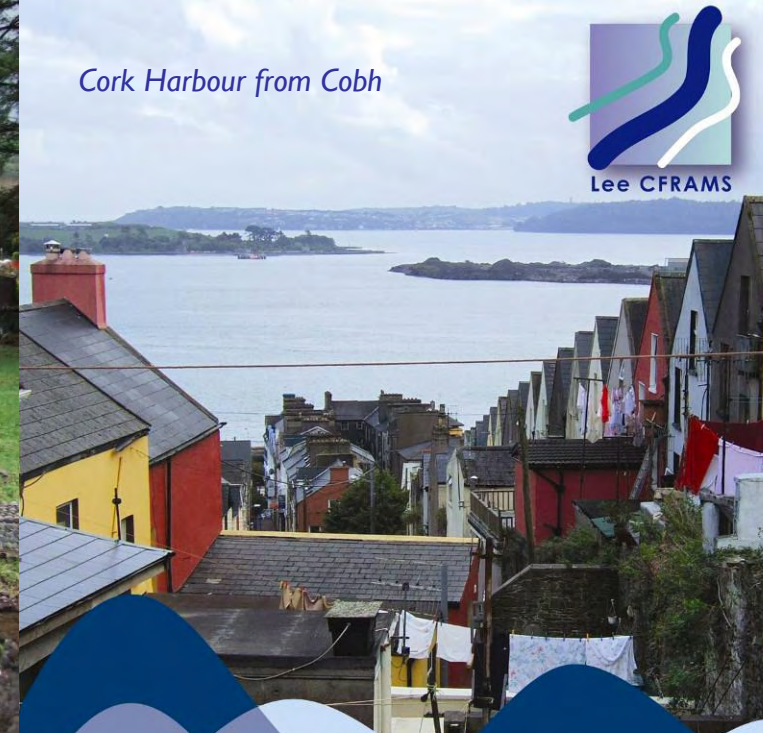
Next issue

The next issue of the newsletter will be available in late February. In the next edition we will provide details on the progress of both the defence asset survey and the channel cross sectional survey. Our 'Focus On' for next month will provide details on the analysis of existing river flows and rainfall in the catchment, technically known as the hydrological assessment.

River Sullane in Baile Mhic Íre



Cork Harbour from Cobh



Contact details

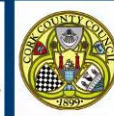
If you have any questions or require any further information relating to this study or if you would like to be included on a distribution list for future issues of this newsletter please email LeeCFRAMStudy@opw.ie

Further information is also available on our project website at www.leecframs.ie

Halcrow

LEE CATCHMENT FLOOD RISK ASSESSMENT AND MANAGEMENT STUDY

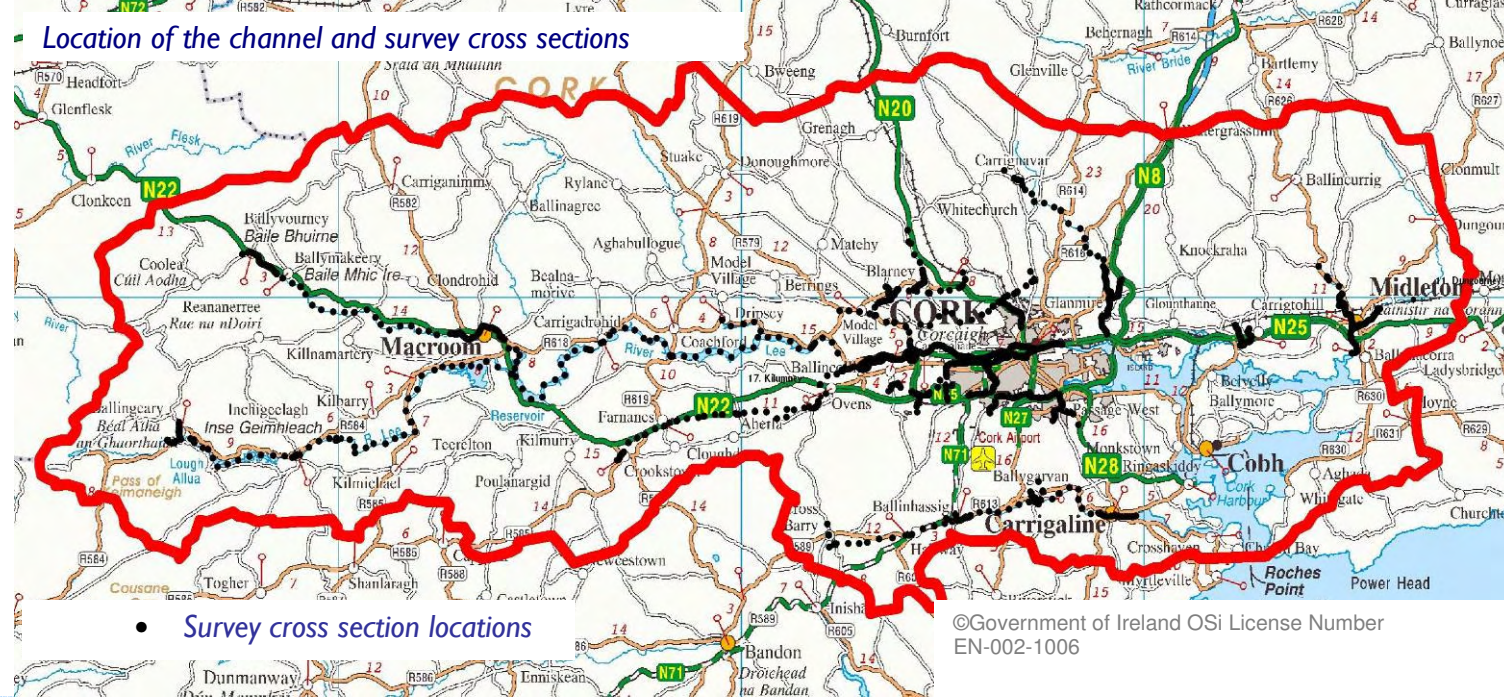
Newsletter - 05
January 2007



Introduction

Hello and welcome to the fifth edition of the Lee CFRAMS monthly newsletter. We are now back at work after the Christmas holidays and focussing on the next stages of the study. The weather continues to be very wet and the river levels are high across the catchment. If you experience any flooding due to heavy rainfall or high tides, please let us know by emailing us at LeeCFRAMStudy@opw.ie or logging on to our website at www.leecframs.ie.

Our 'Focus On' section this month provides information on the topographical survey aspect of the study, which is about to start.



Focus On

Channel and structure cross sectional survey

The OPW has commissioned a topographical survey to obtain river and structure profile data, including cross-sections of the river bed, the river banks and any structures in the river channel, such as bridges or weirs. This information is required at regular intervals along the rivers. The approximate locations of the cross sections to be surveyed are shown in the map.

Cross-sections are not required in Cork Harbour as a detailed bathymetric survey of the area has already been carried out.

This data will enable a computer model of the River Lee and its tributaries to be produced. The model will then be used to represent the



river system in the catchment, which will allow us to determine water levels and flows and to map the extent of flooding resulting from different sized flood events.

In order to collect the required data it may be necessary for our survey contractor, Maltby Land Surveys, to gain access to your property. Access inside houses and buildings is not required.

We would be grateful if you could assist the study by granting the surveyor(s) access to your property to carry out this important survey work. All surveyors will carry identification documents and will take great care not to damage property or inconvenience the occupiers.

The photograph shows three surveyors taking levels on a bridge.