

Quarterly review

Since our last quarterly review the project team have progressed with a number of different aspects of the project. The flood mapping process is almost complete. The project team are currently working on developing flood maps for Cork City. These flood maps are being used in conjunction with a range of other datasets to develop a list of potential flood risk management options for the catchment. Environmental factors are being incorporated into these options through the Strategic Environmental Assessment (SEA). Work will continue on developing options over the next number of weeks, with the preferred list of options being presented at a series of public information days to be held during autumn 2008.

Ballyvourney Bridge on the Sullane River



Reservoir on the River Lee upstream of Carrigadrohid



Contact details

If you have any questions or require any further information relating to this study or if you would like to be included on a distribution list for future issues of this newsletter please email LeeCFRAMStudy@opw.ie

Further information is also available on our project website at www.leecframs.ie



Belvelly Castle on Great Island

Next issue

In next month's issue we will continue with our series of **Focus on** sections providing information on the decision making process for selecting flood risk management options. The next issue of the newsletter will be available at the end of September.

LEE CATCHMENT FLOOD RISK ASSESSMENT AND MANAGEMENT STUDY

Newsletter - 24
August 2008

Halcrow

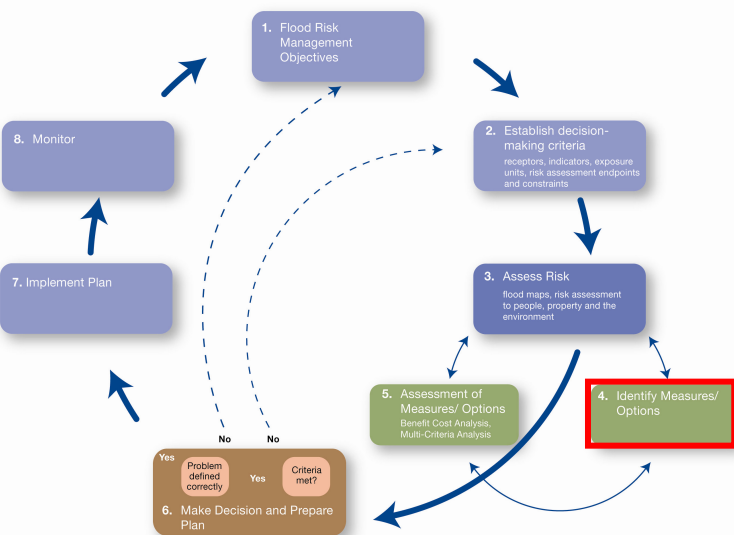


Introduction

Hello and welcome to the August 2008 edition of the Lee CFRAMS newsletter. In this month's newsletter we provide a review of the work carried out over the last three months and have a **Focus On** section which provides information on a number of potential flood risk management options for the Lee catchment.

Focus On

Flood risk management measures and options



Following on from last month's **Focus On** which looked at flood risk management objectives, this month's **Focus on** provides information on a number of potential flood risk management measures and options. Identifying potential flood risk management measures and options is another step in the different stages of selecting an appropriate flood risk management plan for the Lee catchment as shown in the flow chart above.

A flood risk management measure looks at one method of protecting an area against flooding; a flood risk management option considers a number of measures to protect an area against flooding.

A full range of potential flood risk management measures have been developed for the Lee CFRAMS based on knowledge and experience of previous flood risk assessment and management plans. The list of measures is covered under four categories as detailed below.

- Do nothing;
- Do minimum;
- Non structural measures; and
- Structural measures.

Do nothing

The 'Do Nothing' scenario is the baseline against which all other measures and options will be compared. Under this scenario all operation and maintenance activities within the catchment would cease.

Do minimum

The 'do minimum' involves continuation of present day maintenance and flood warning tasks.

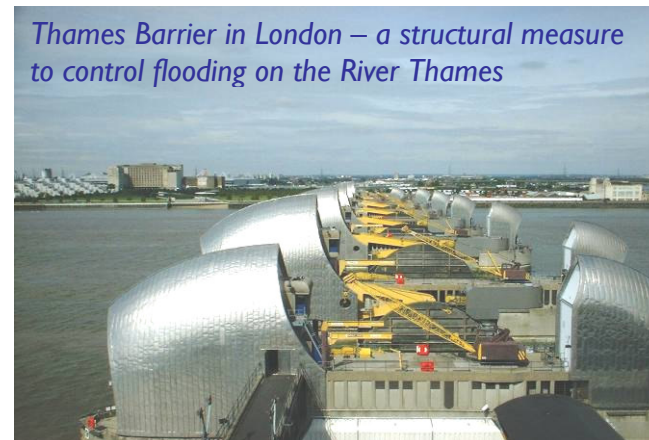
Non structural measures

Non-structural measures include: flood warning and flood forecasting systems and public awareness and preparedness campaign.

Structural measures

Structural flood risk management measures involve the construction of physical defences to provide protection against flooding. Structural measures include flood walls, flood embankments, demountable flood defences, tidal barriers, and flood storage reservoirs.

Further information on some these measures will be included in future editions of the newsletter.



In total, seventeen flood risk management measures have been identified for the Lee CFRAMS. A preliminary evaluation of these measures is used to rule out measures which are not appropriate for a particular assessment unit. The assessment units ensure the correct focus in assessing flood risk options as different areas of the catchment have different priorities and require different flood risk management options.

Each of the measures on the list will be considered on the following core criteria: technical, economic, social, and environmental. Outside of these core criteria, consideration will also be given to issues which may have a significant influence on decision making in specific areas.

A measure can be ruled out on the basis of one of the core criteria, or could be ruled out due to a combination of different criteria. The list of measures identified from this process is then subject to a detailed analysis against the flood risk management objectives (please see the **Focus On** section in last month's newsletter).